

Installing Synapse

1. In Microsoft Internet Explorer (must be at version 6.0), browse to <https://synapse.reliableimaging.com>.

2. At the login prompt, enter your username and password.



3. At the Code Download page, click on the Code Download button to install the software.



4. At the Internet Explorer – Security Warning popup, click Install. This will install the FujInst.cab file. This is the installer file that helps install the Synapse software.



5. Another Internet Explorer – Security Warning popup will ask you to install SynapseWorkstation.cab. Click Install. This is the actual Synapse software.



6. The Synapse application will begin downloading and automatically install on your workstation (You must have either local Administrative or Power user privileges on your workstation to successfully install the Synapse software). This may take about a minute.

7. When the Synapse software is fully installed, you will get a message stating that the installation was successful.

Synapse Workstation Software Update

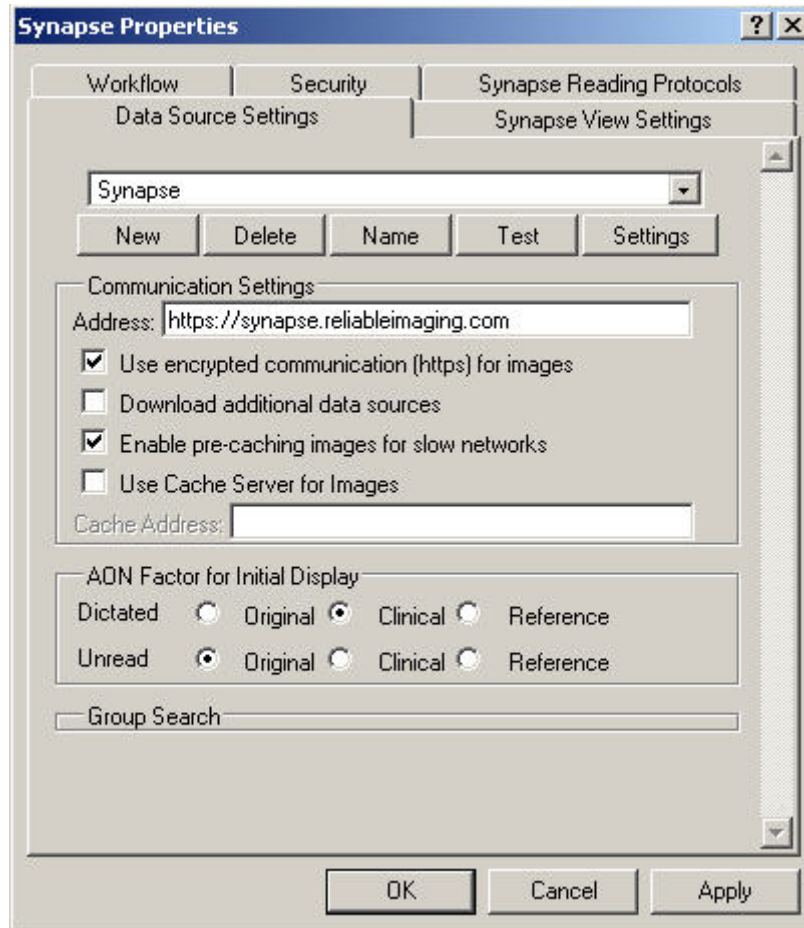
Installation of version 3,1,1127,0 was successful

8. Close the Internet Explorer program.

9. You should now see a Synapse icon on your desktop. You may have to refresh your desktop by pressing F5 for the icon to appear.



10. On the Synapse icon, right click and choose properties. Configure the DataSource Settings as shown below.



NOTE – For faster image retrieval, set the AON Factor for Initial Display section to either Clinical or Reference images.

Removing Synapse

1. Using a user with local administrative privileges, go to Start --> Settings --> Control Panel.
2. Double click on Add/Remove Programs.
3. Choose Synapse from the list and click Change/Remove.
4. At the logon prompt, enter a valid Synapse user account.



5. Internet Explorer will open. At the Synapse Uninstall window, click the “Click here to remove Synapse” button.



6. “Synapse Removal is Complete” will appear when the Synapse code is successfully removed from the workstation.

Synapse Removal is Complete